

A
B
C
D
E
F
G

EC8x2 - INLINE - MALE - ASSEMBLY



STRAIGHT CABLE EXIT - 6awg OR 8awg CONFIGURATIONS

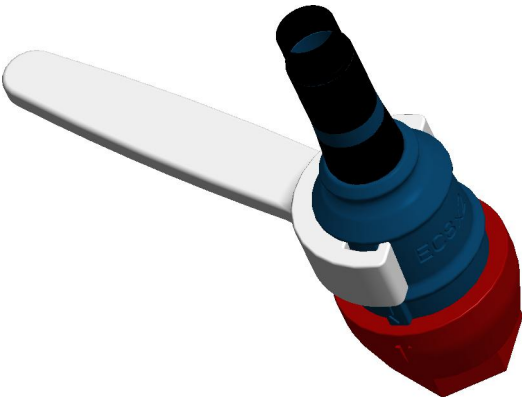


RIGHT ANGLE CABLE EXIT - 6awg OR 8awg CONFIGURATIONS

TIGHTENING SOCKET AND SPANNER TOOLS

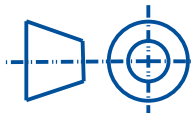



TERMINALS INSERTION TOOL



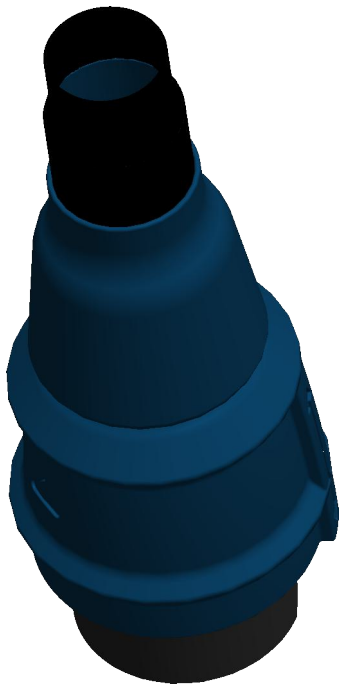
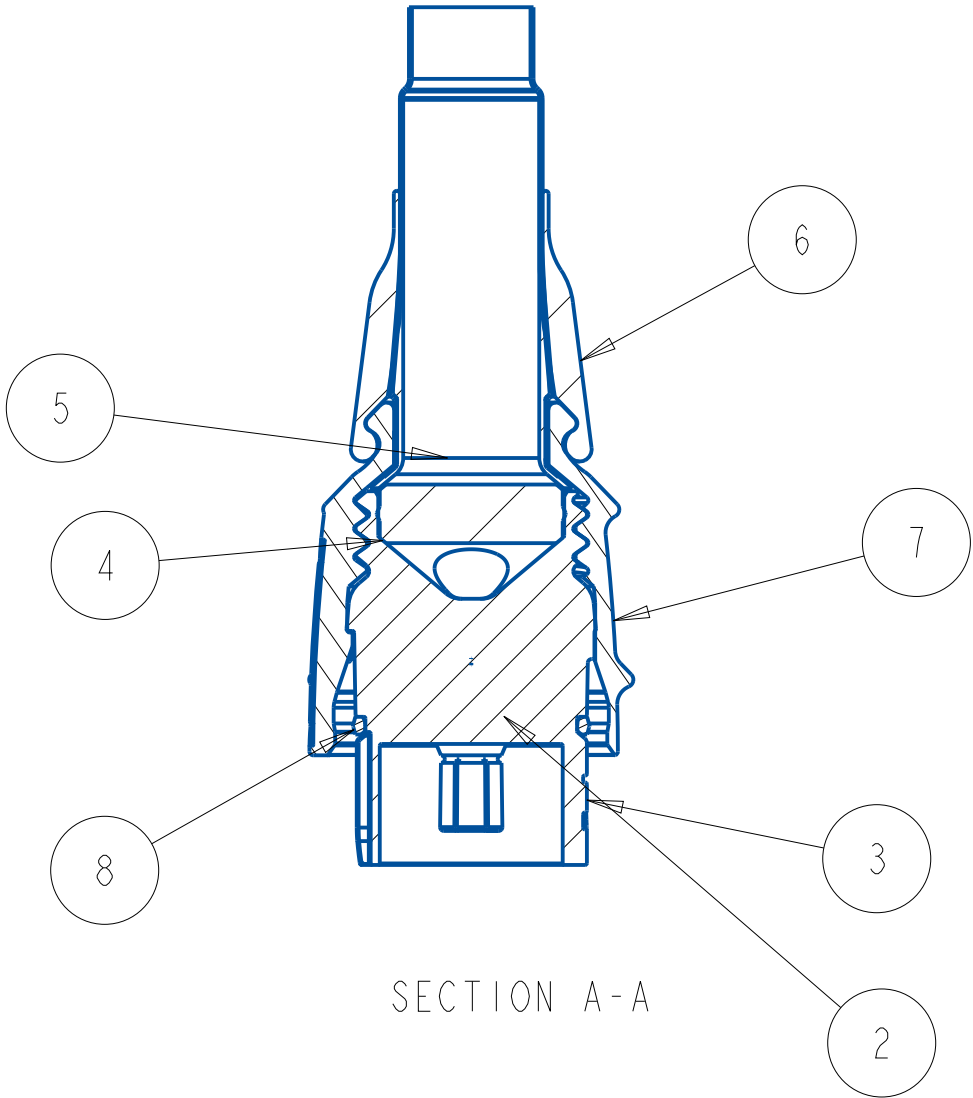
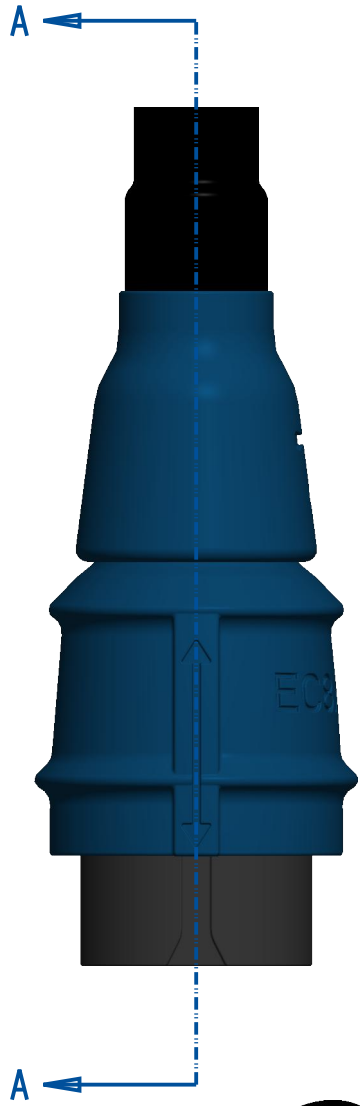
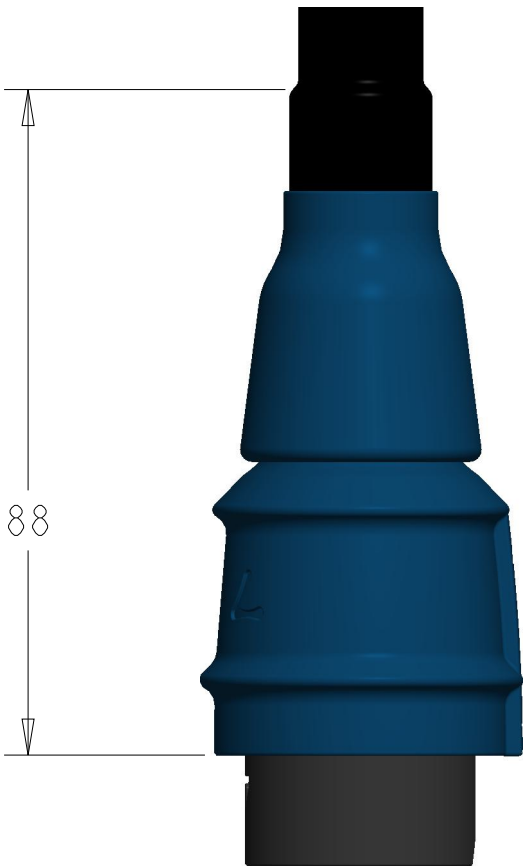
DUST CAP
("DCAP" P/N SUFFIX)

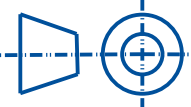



<div>PROJECT</div> <div>LunaPlugs</div> <div></div> <div><small>THIS DOCUMENT IS SUPPLIED IN CONFIDENCE. NO REPRODUCTION OF THIS DOCUMENT IN PART OR IN WHOLE OR THEREON OF THE ITEMS SHOWN MAY BE MADE WITHOUT THE COPYRIGHT OWNERS WRITTEN PERMISSION</small></div> <div></div>	<div>UNLESS OTHERWISE SPECIFIED ALL DIMENSIONS ARE IN MILLIMETERS. TOLERANCES ARE +/- 0.1MM +/- 1°</div> <div>DO NOT SCALE</div> <div>SHEET A3 SIZE</div> <div>TITLE lcn-ec8x2-inlm.asm</div> <div>ASSEMBLY NUMBER: LCN-EC8X2-INLM</div>	<div>DRAWN BY</div>	<div>DATE</div> <div>AUG 2025</div>
		<div>CHECKED BY</div>	<div>DATE</div>
		<div>APPROVED BY</div>	<div>DATE</div>
		<div>SCALE 0.500</div>	
		<div>MASS (Kg):</div>	
		<div>ISSUE</div> <div>E1.0</div>	

EC8x2 - INLINE MALE - STRAIGHT EXIT - 6AWG CABLE
2X6AWG SHEATH DIAMETER = 15mm

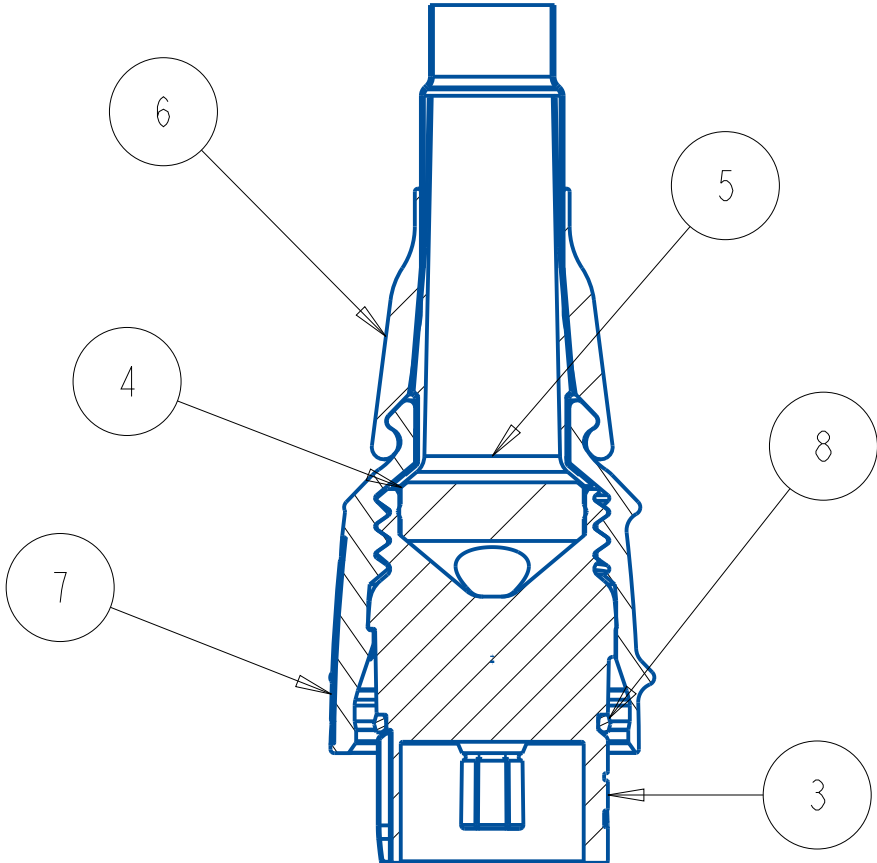
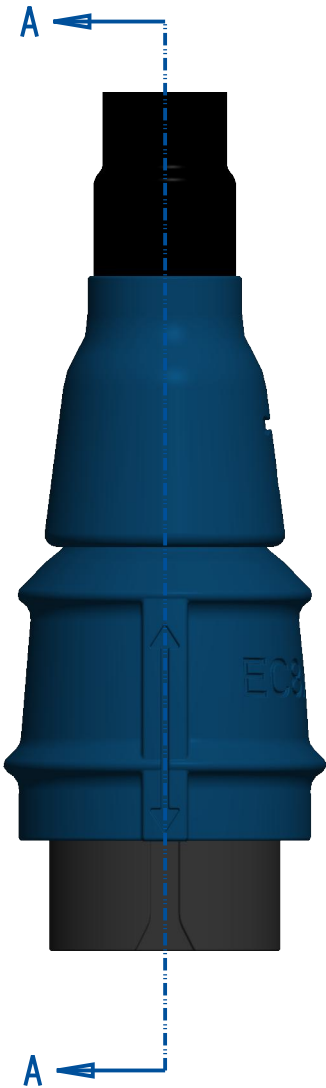
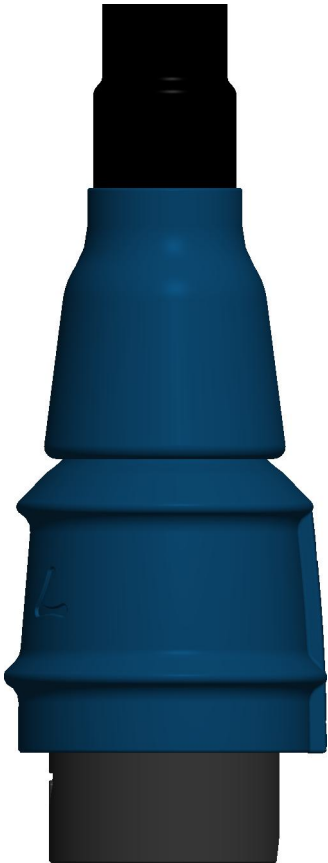
ID	P/N	SOURCE	QTY
1	HEATSHRINK	LUNA DRIVES WEBSITE	1
2	LD22010402	LUNA DRIVES WEBSITE	2
3	M1-EC8X2-INLM-BODY	LD 3D PRINT	1
4	M2-EC8X2-GLAND-SHORT-6AWG	LD 3D PRINT	1
5	M2-EC8X2-INL-TRUNK-6AWG	LD 3D PRINT	1
6	M2-EC8X2-INL-WIRECAP-ST	LD 3D PRINT	1
7	M2-EC8X2-INLM-MOLDING	LD 3D PRINT	1
8	M2-EC8X2-MALE-ORING	LD 3D PRINT	1



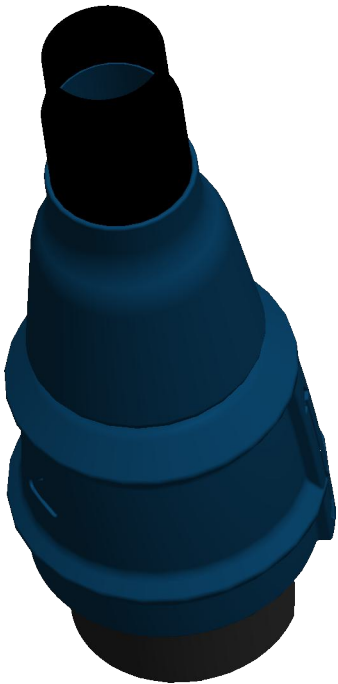
<div>PROJECT</div> <div>LunaPlugs</div> <div></div> <div><small>THIS DOCUMENT IS SUPPLIED IN CONFIDENCE. NO REPRODUCTION OF THIS DOCUMENT IN PART OR WHOLE OR THEREON OF THE ITEMS SHOWN MAY BE MADE WITHOUT THE COPYRIGHT OWNERS WRITTEN PERMISSION</small></div> <div></div>	<div>UNLESS OTHERWISE SPECIFIED ALL DIMENSIONS ARE IN MILLIMETERS. TOLERANCES ARE +/- 0.1MM +/- 1°</div> <div>DO NOT SCALE</div> <div>SHEET A3 SIZE</div>	<div>DRAWN BY</div>	<div>DATE</div> <div>AUG 2025</div>
		<div>CHECKED BY</div>	<div>DATE</div>
		<div>APPROVED BY</div>	<div>DATE</div>
		<div>SCALE 1.000</div>	<div>SHEET 2 OF 9</div>
<div>TITLE</div> <div>lcn-ec8x2-inlm.asm</div>		<div>MASS (Kg):</div>	
<div>ASSEMBLY NUMBER:</div> <div>LCN-EC8X2-INLM</div>		<div>ISSUE</div> <div>E1.0</div>	

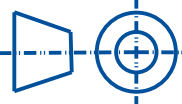

EC8x2 - INLINE MALE - STRAIGHT EXIT - 8AWG CABLE
2X8AWG SHEATH DIAMETER = 11mm

ID	P/N	SOURCE	QTY
1	HEATSHRINK	LUNA DRIVES WEBSITE	1
2	LD22010402	LUNA DRIVES WEBSITE	2
3	M1-EC8X2-INLM-BODY	LD 3D PRINT	1
4	M2-EC8X2-GLAND-SHORT-8AWG	LD 3D PRINT	1
5	M2-EC8X2-INL-TRUNK-8AWG	LD 3D PRINT	1
6	M2-EC8X2-INL-WIRECAP-ST	LD 3D PRINT	1
7	M2-EC8X2-INLM-MOLDING	LD 3D PRINT	1
8	M2-EC8X2-MALE-ORING	LD 3D PRINT	1



SECTION A-A

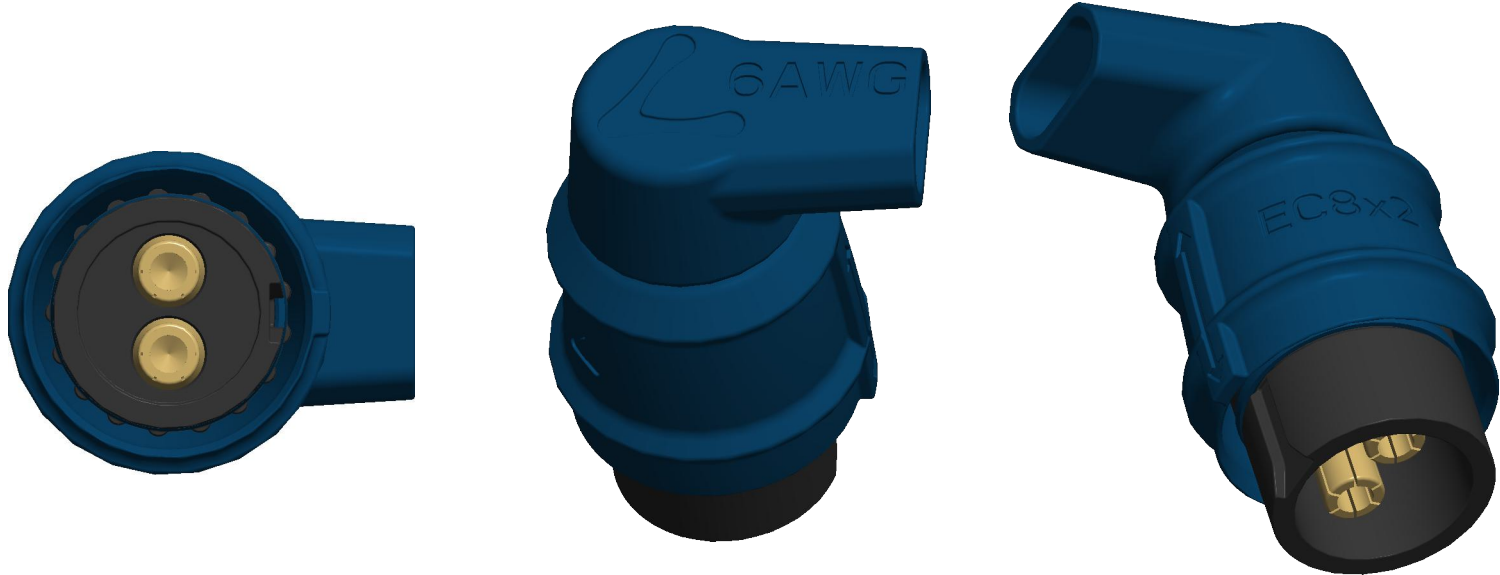
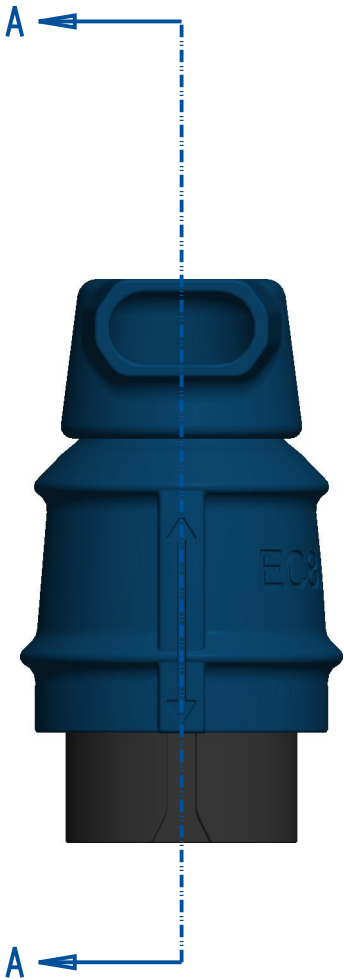
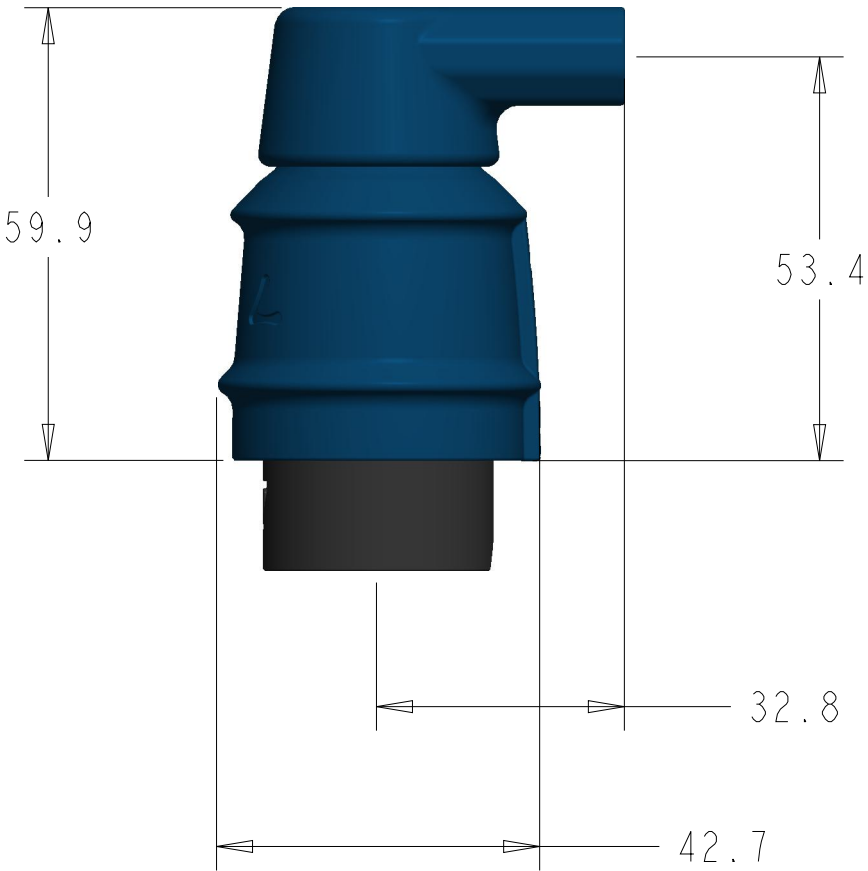
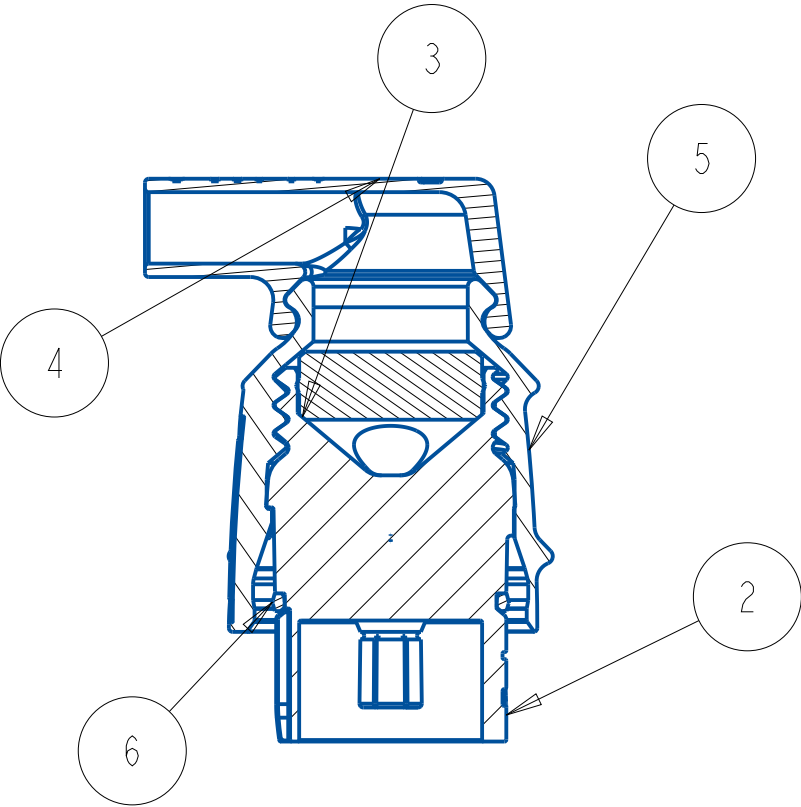


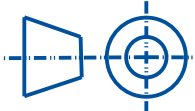

PROJECT LunaPlugs 	UNLESS OTHERWISE SPECIFIED ALL DIMENSIONS ARE IN MILLIMETERS. TOLERANCES ARE +/- 0.1MM +/- 1° DO NOT SCALE SHEET SIZE A3	DRAWN BY	DATE AUG 2025
		CHECKED BY	DATE
		APPROVED BY	DATE
		SCALE 1.000	SHEET 3 OF 9
THIS DOCUMENT IS SUPPLIED IN CONFIDENCE. NO REPRODUCTION OF THIS DOCUMENT IN PART OR IN WHOLE OR THEREON OF THE ITEMS SHOWN MAY BE MADE WITHOUT THE COPYRIGHT OWNERS WRITTEN PERMISSION 	TITLE lcn-ec8x2-inlm.asm		MASS (Kg):
	ASSEMBLY NUMBER: LCN-EC8X2-INLM		ISSUE E1.0

EC8x2 - INLINE MALE - RIGHT ANGLE EXIT - 6AWG CABLE

ID	P/N	SOURCE	QTY
1	LD22010402	LUNA DRIVES WEBSITE	2
2	M1-EC8X2-INLM-BODY	LD 3D PRINT	1
3	M2-EC8X2-GLAND-6AWG	LD 3D PRINT	1
4	M2-EC8X2-INL-WIRECAP-RA-6AWG	LD 3D PRINT	1
5	M2-EC8X2-INLM-MOLDING	LD 3D PRINT	1
6	M2-EC8X2-MALE-ORING	LD 3D PRINT	1

SECTION A-A

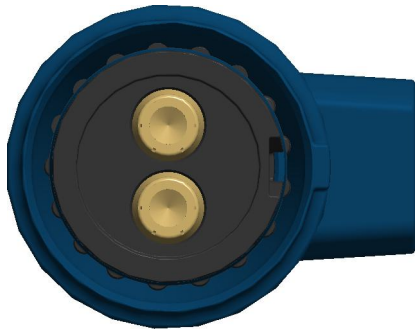
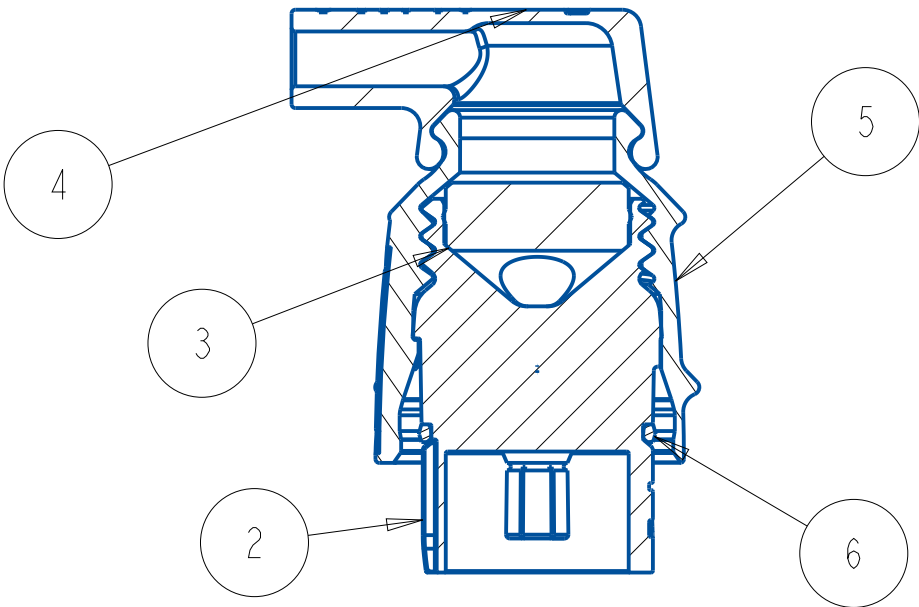
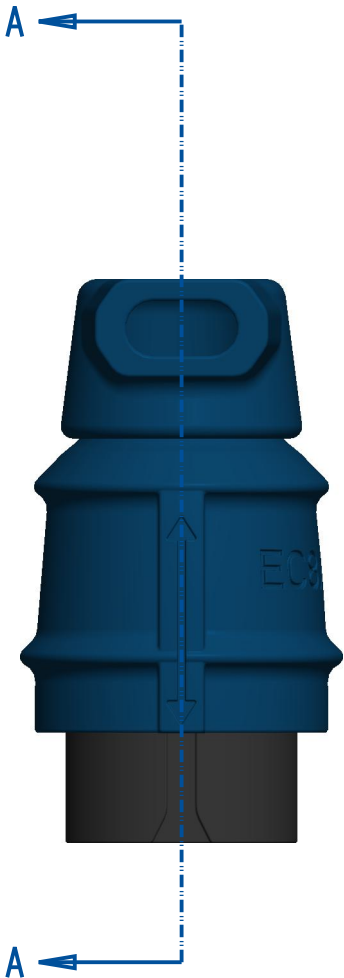
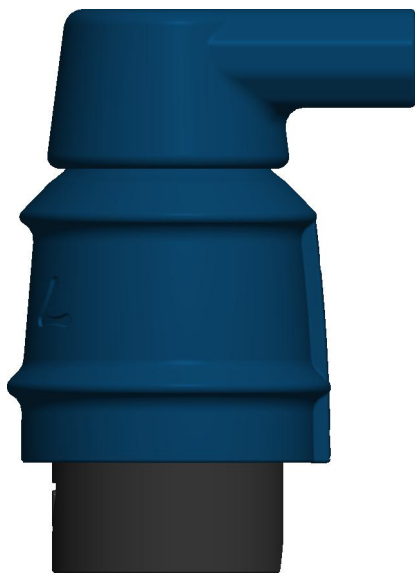


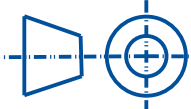

<div>PROJECT</div> <div>LunaPlugs</div> <div></div> <div><small>THIS DOCUMENT IS SUPPLIED IN CONFIDENCE. NO REPRODUCTION OF THIS DOCUMENT IN PART OR IN WHOLE OR THEREON OF THE ITEMS SHOWN MAY BE MADE WITHOUT THE COPYRIGHT OWNERS WRITTEN PERMISSION</small></div> <div></div>	<div>UNLESS OTHERWISE SPECIFIED ALL DIMENSIONS ARE IN MILLIMETERS. TOLERANCES ARE +/- 0.1MM +/- 1°</div> <div>DO NOT SCALE</div> <div>SHEET A3 SIZE</div>	<div>DRAWN BY</div>	<div>DATE</div> <div>AUG 2025</div>
		<div>CHECKED BY</div>	<div>DATE</div>
		<div>APPROVED BY</div>	<div>DATE</div>
		<div>SCALE 1.000</div>	<div>SHEET 4 OF 9</div>
<div>TITLE</div> <div>lcn-ec8x2-inlm.asm</div>		<div>MASS (Kg):</div>	
<div>ASSEMBLY NUMBER:</div> <div>LCN-EC8X2-INLM</div>		<div>ISSUE</div> <div>E1.0</div>	

EC8x2 - INLINE MALE - RIGHT ANGLE EXIT - 8AWG CABLE

ID	P/N	SOURCE	QTY
1	LD22010402	LUNA DRIVES WEBSITE	2
2	M1-EC8X2-INLM-BODY	LD 3D PRINT	1
3	M2-EC8X2-GLAND-8AWG	LD 3D PRINT	1
4	M2-EC8X2-INL-WIRECAP-RA-8AWG	LD 3D PRINT	1
5	M2-EC8X2-INLM-MOLDING	LD 3D PRINT	1
6	M2-EC8X2-MALE-ORING	LD 3D PRINT	1

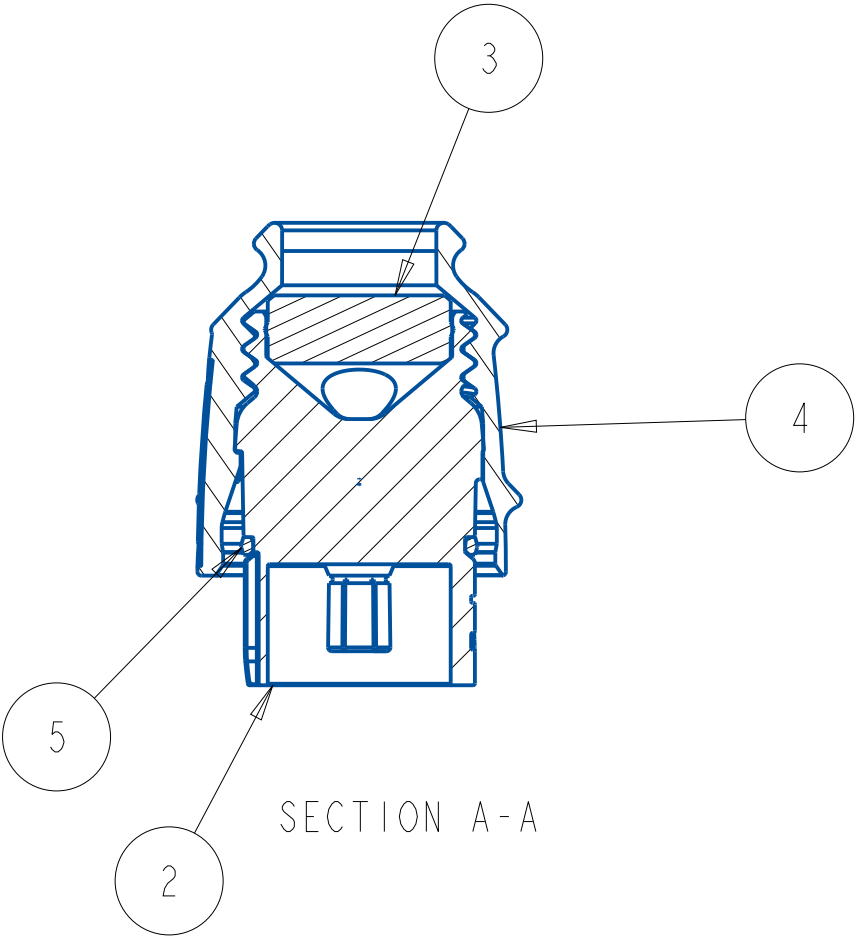
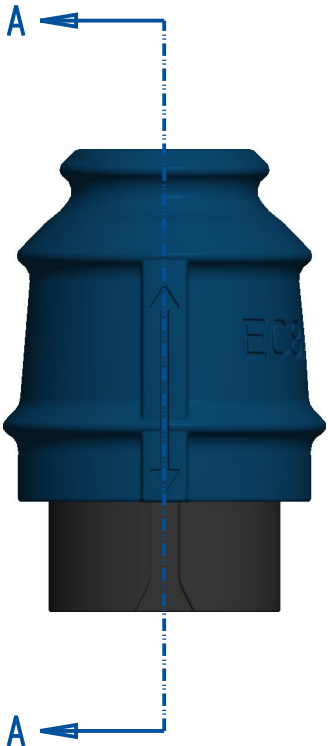
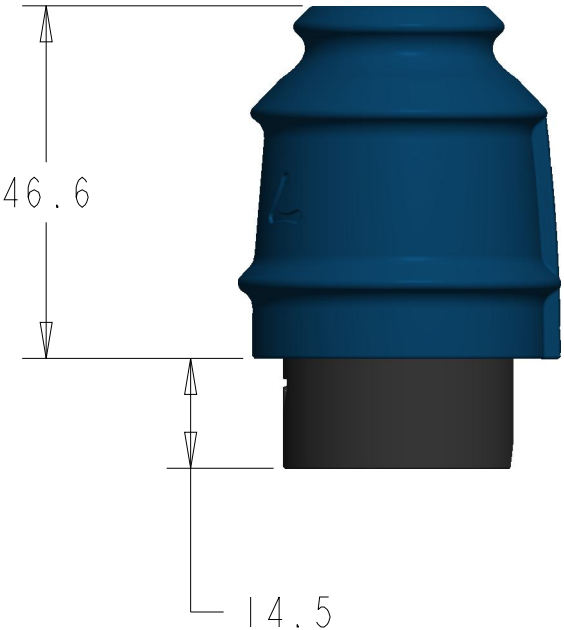
SECTION A-A

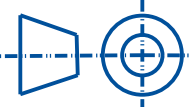



<div>PROJECT</div> <div>LunaPlugs</div> <div></div> <div><div>THIS DOCUMENT IS SUPPLIED IN CONFIDENCE. NO REPRODUCTION OF THIS DOCUMENT IN PART OR IN WHOLE OR THEREON OF THE ITEMS SHOWN MAY BE MADE WITHOUT THE COPYRIGHT OWNERS WRITTEN PERMISSION</div><div></div></div>	<div>UNLESS OTHERWISE SPECIFIED ALL DIMENSIONS ARE IN MILLIMETERS. TOLERANCES ARE +/- 0.1MM +/- 1°</div> <div>DO NOT SCALE</div> <div>SHEET A3 SIZE</div> <div>TITLE lcn-ec8x2-inlm.asm</div> <div>ASSEMBLY NUMBER: LCN-EC8X2-INLM</div>	<div>DRAWN BY</div>	<div>DATE</div> <div>AUG 2025</div>
		<div>CHECKED BY</div>	<div>DATE</div>
		<div>APPROVED BY</div>	<div>DATE</div>
		<div>SCALE 1.000</div>	<div>SHEET 5 OF 9</div>
		<div>MASS (Kg):</div>	
		<div>ISSUE</div> <div>E1.0</div>	

EC8x2 - INLINE MALE - MIN. SEAL - 6AWG CABLE
MINIMUM REQUIRED TO SEAL ALL EXPOSED CONTACTS.

ID	P/N	SOURCE	QTY
1	LD22010402	LUNA DRIVES WEBSITE	2
2	M1-EC8X2-INLM-BODY	LD 3D PRINT	1
3	M2-EC8X2-GLAND-8AWG	LD 3D PRINT	1
4	M2-EC8X2-INLM-MOLDING	LD 3D PRINT	1
5	M2-EC8X2-MALE-ORING	LD 3D PRINT	1



<div>PROJECT</div> <div>LunaPlugs</div> <div></div> <div><div><div>THIS DOCUMENT IS SUPPLIED IN CONFIDENCE. NO REPRODUCTION OF THIS DOCUMENT IN PART OR IN WHOLE OR THEREON OF THE ITEMS SHOWN MAY BE MADE WITHOUT THE COPYRIGHT OWNERS WRITTEN PERMISSION</div><div></div></div></div>	<div>UNLESS OTHERWISE SPECIFIED ALL DIMENSIONS ARE IN MILLIMETERS. TOLERANCES ARE +/- 0.1MM +/- 1°</div> <div>DO NOT SCALE</div> <div>SHEET A3 SIZE</div> <div>TITLE lcn-ec8x2-inlm.asm</div> <div>ASSEMBLY NUMBER: LCN-EC8X2-INLM</div>	<div>DRAWN BY</div>	<div>DATE</div> <div>AUG 2025</div>
		<div>CHECKED BY</div>	<div>DATE</div>
		<div>APPROVED BY</div>	<div>DATE</div>
		<div>SCALE 1.000</div>	<div>SHEET 6 OF 9</div>
		<div>MASS (Kg):</div>	
		<div>ISSUE</div> <div>E1.0</div>	

A

B

C

D

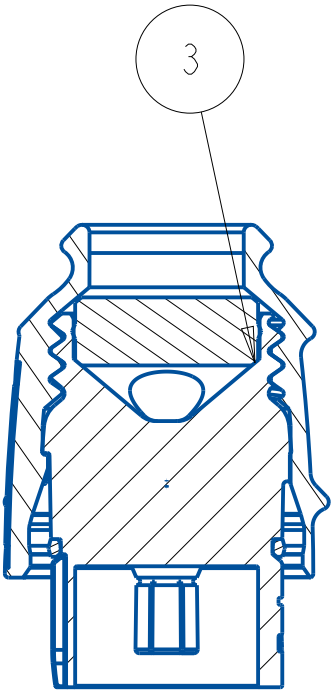
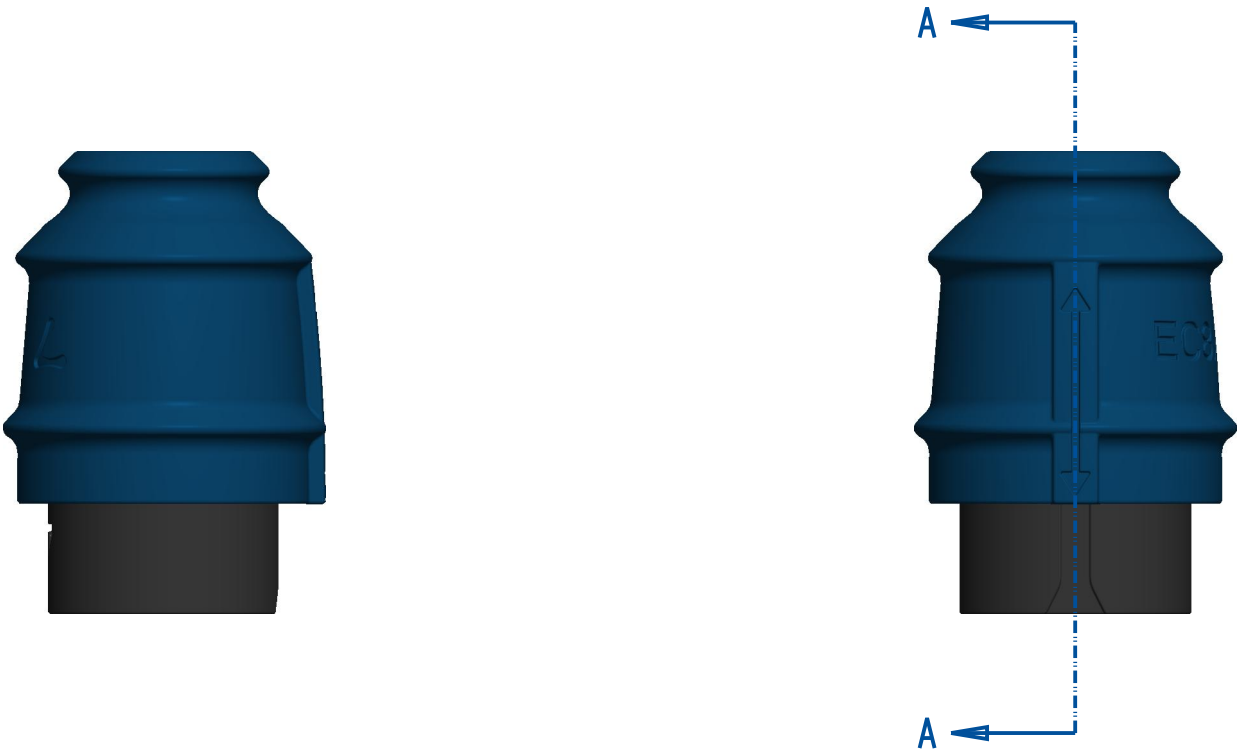
E

F

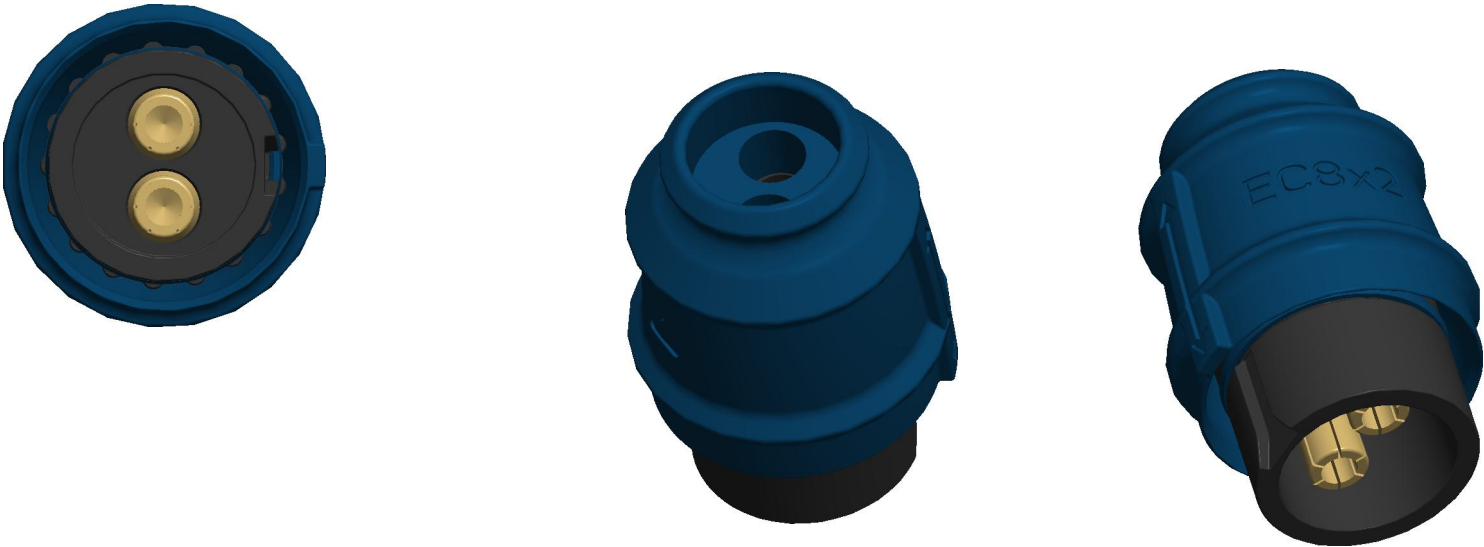
G

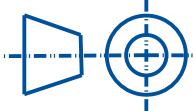

EC8x2 - INLINE MALE - MIN. SEAL - 8AWG CABLE
MINIMUM REQUIRED TO SEAL ALL EXPOSED CONTACTS.

ID	P/N	SOURCE	QTY
1	LD22010402	LUNA DRIVES WEBSITE	2
2	M1-EC8X2-INLM-BODY	LD 3D PRINT	1
3	M2-EC8X2-GLAND-6AWG	LD 3D PRINT	1
4	M2-EC8X2-INLM-MOLDING	LD 3D PRINT	1
5	M2-EC8X2-MALE-ORING	LD 3D PRINT	1



SECTION A-A

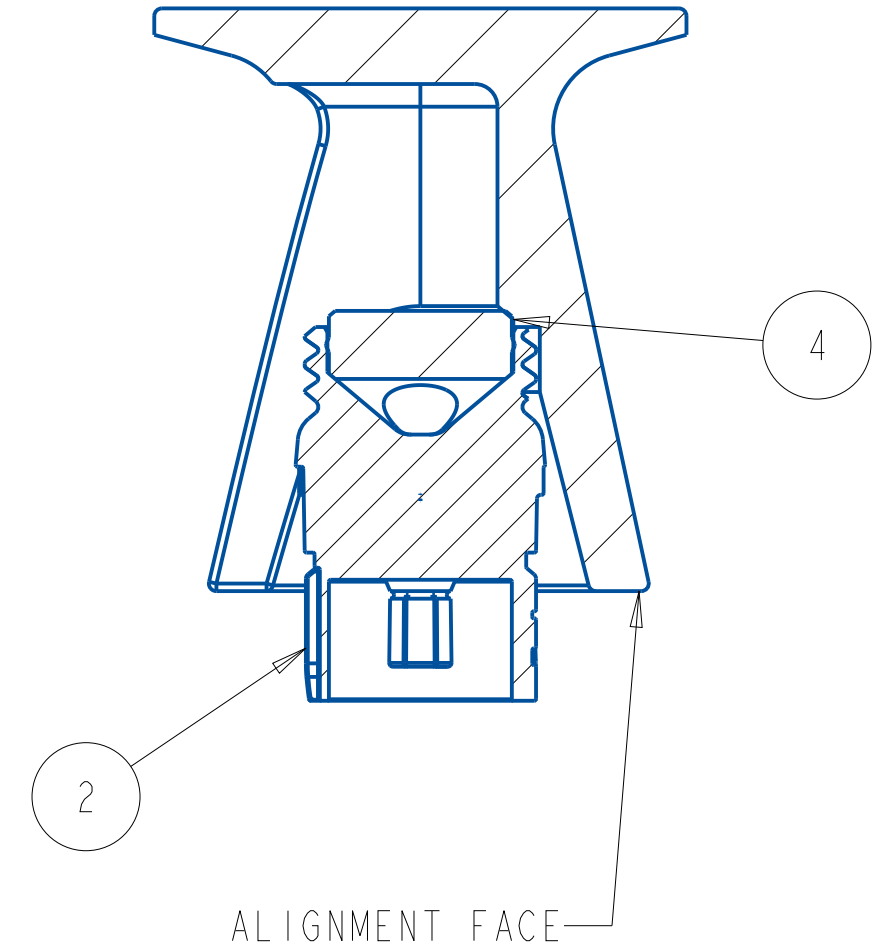
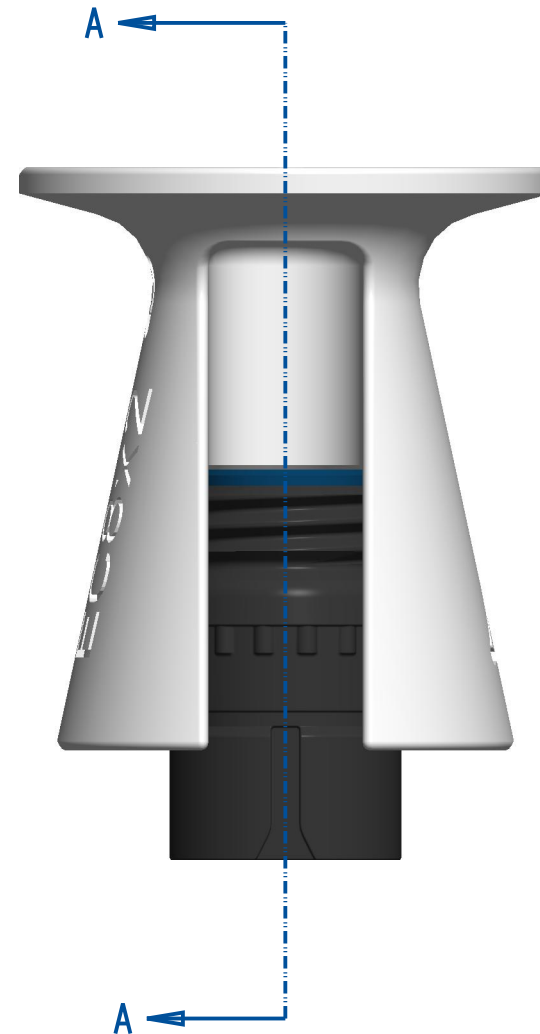


<div>PROJECT</div> <div>LunaPlugs</div> <div></div> <div><small>THIS DOCUMENT IS SUPPLIED IN CONFIDENCE. NO REPRODUCTION OF THIS DOCUMENT IN PART OR IN WHOLE OR THEREON OF THE ITEMS SHOWN MAY BE MADE WITHOUT THE COPYRIGHT OWNERS WRITTEN PERMISSION</small></div> <div></div>	<div>UNLESS OTHERWISE SPECIFIED ALL DIMENSIONS ARE IN MILLIMETERS. TOLERANCES ARE +/- 0.1MM +/- 1°</div> <div>DO NOT SCALE</div> <div>SHEET A3 SIZE</div>	<div>DRAWN BY</div>	<div>DATE</div> <div>AUG 2025</div>
		<div>CHECKED BY</div>	<div>DATE</div>
		<div>APPROVED BY</div>	<div>DATE</div>
		<div>SCALE 1.000</div>	<div>SHEET 7 OF 9</div>
<div>TITLE</div> <div>lcn-ec8x2-inlm.asm</div>		<div>MASS (Kg):</div>	
<div>ASSEMBLY NUMBER:</div> <div>LCN-EC8X2-INLM</div>		<div>ISSUE</div> <div>E1.0</div>	

EC8x2 INLINE MALE
TERMINALS & GLAND INSERTION TOOL:
INSERT UNTIL PARALLEL SECTION SUB-FLUSH BY 0.5MM-1MM

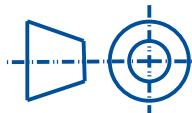

ID	P/N	SOURCE	QTY
1	LD22010402	LUNA DRIVES WEBSITE	2
2	M1-EC8X2-INLM-BODY	LD 3D PRINT	1
3	M2-EC8X2-GLAND-6AWG	LD 3D PRINT	1
4	M3-EC8X2-INLM-TOOL-COMP	LD 3D PRINT	1

SECTION A-A

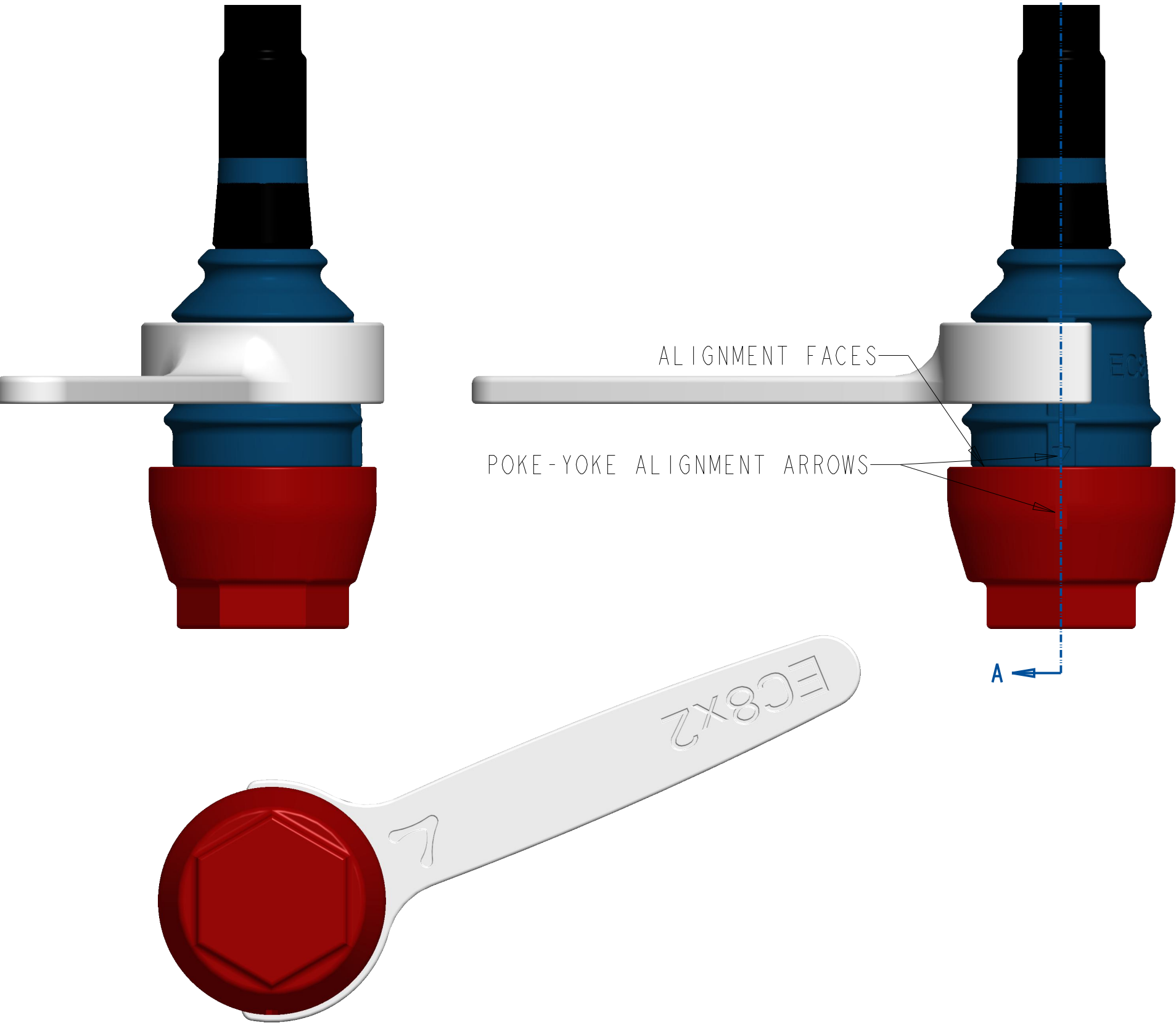


TERMINAL INSERTION TO BE CARRIED OUT WITH PUNCHES
OF THE FOLLOWING DIAMETERS:

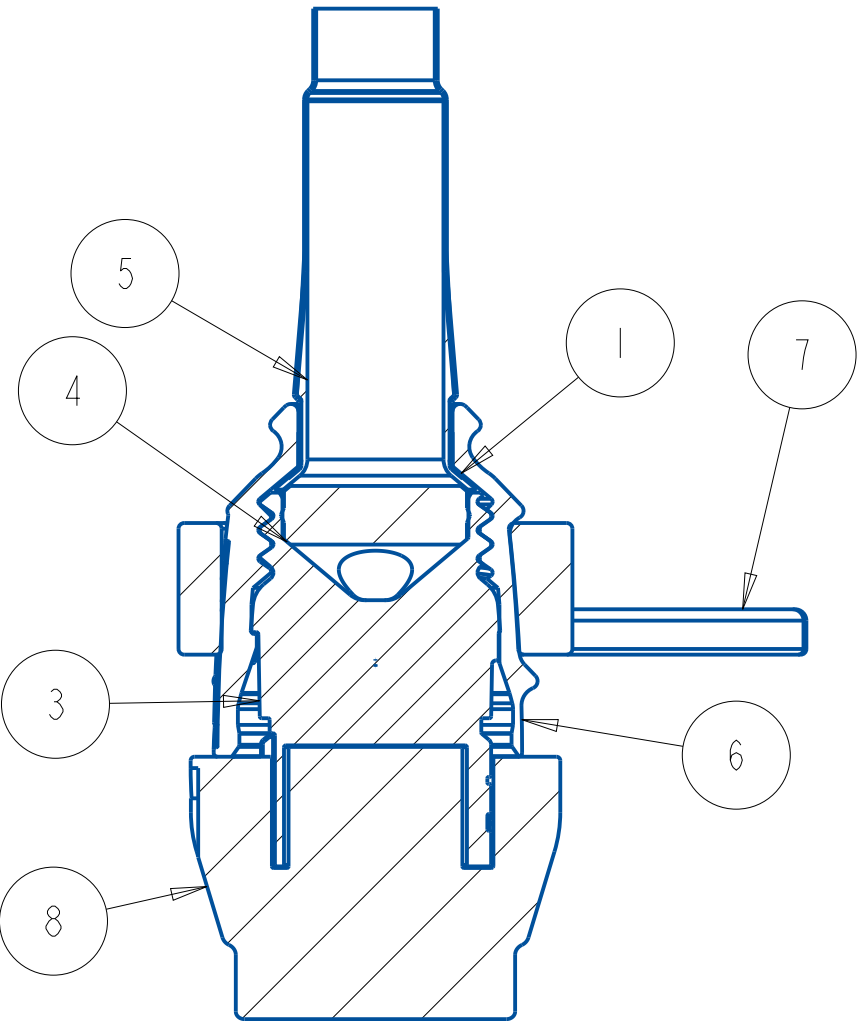
EC5 MALE =<2MM
EC5 FEMALE =<5MM
EC8 MALE =<4MM
EC8 FEMALE =<8MM

<div>PROJECT</div> <div>LunaPlugs</div> <div></div> <div><div>THIS DOCUMENT IS SUPPLIED IN CONFIDENCE. NO REPRODUCTION OF THIS DOCUMENT IN PART OR IN WHOLE OR THEREON OF THE ITEMS SHOWN MAY BE MADE WITHOUT THE COPYRIGHT OWNERS WRITTEN PERMISSION</div><div></div></div>	<div>UNLESS OTHERWISE SPECIFIED ALL DIMENSIONS ARE IN MILLIMETERS. TOLERANCES ARE $\pm 0.1\text{MM}$ $\pm 1^\circ$</div> <div>DO NOT SCALE</div> <div>SHEET A3 SIZE</div> <div>SCALE 1.000</div> <div>TITLE lcn-ec8x2-inlm.asm</div> <div>ASSEMBLY NUMBER: LCN-EC8X2-INLM</div>	<div>DRAWN BY</div>	<div>DATE</div> <div>AUG 2025</div>
		<div>CHECKED BY</div>	<div>DATE</div>
		<div>APPROVED BY</div>	<div>DATE</div>
			<div>SHEET 8 OF 9</div>
		<div>MASS (Kg):</div>	
		<div>ISSUE</div> <div>E1.0</div>	



EC8x2 INLINE MALE
FLEXIBLE BODY ASSEMBLY TIGHTENING TOOLS:



ID	P/N	SOURCE	QTY
1	HEATSHRINK	LUNA DRIVES WEBSITE	1
2	LD22010402	LUNA DRIVES WEBSITE	2
3	M1-EC8X2-INLM-BODY	LD 3D PRINT	1
4	M2-EC8X2-GLAND-SHORT-6AWG	LD 3D PRINT	1
5	M2-EC8X2-INL-TRUNK-6AWG	LD 3D PRINT	1
6	M2-EC8X2-INLM-MOLDING	LD 3D PRINT	1
7	M3-EC8X2-INL-TOOL-SPANNER	LD 3D PRINT	1
8	M3-EC8X2-M-TOOL-TFIXTURE	LD 3D PRINT	1



SECTION A-A

<div>PROJECT</div> <div>LunaPlugs</div> <div></div> <div><small>THIS DOCUMENT IS SUPPLIED IN CONFIDENCE. NO REPRODUCTION OF THIS DOCUMENT IN PART OR IN WHOLE OR THEREON OF THE ITEMS SHOWN MAY BE MADE WITHOUT THE COPYRIGHT OWNERS WRITTEN PERMISSION</small></div> <div></div>	<div>UNLESS OTHERWISE SPECIFIED ALL DIMENSIONS ARE IN MILLIMETERS. TOLERANCES ARE +/- 0.1MM +/- 1°</div> <div>DO NOT SCALE</div> <div>SHEET A3 SIZE</div> <div>TITLE lcn-ec8x2-inlm.asm</div> <div>ASSEMBLY NUMBER: LCN-EC8X2-INLM</div>	<div>DRAWN BY</div>	<div>DATE</div> <div>AUG 2025</div>
		<div>CHECKED BY</div>	<div>DATE</div>
		<div>APPROVED BY</div>	<div>DATE</div>
		<div>SCALE 1.000</div>	<div>SHEET 9 OF 9</div>
		<div>MASS (Kg):</div>	
		<div>ISSUE</div> <div>E1.0</div>	